

**BINGO Eastern Creek Landfill  
Update on Permanent Flare works:  
Drilling program and leachate riser upgrade**

**August 2022 – Weekly Update: w/c 12 September**

# Executive Summary

---

Work continues on the landfill gas collection system (LFGCS) at our Eastern Creek site.

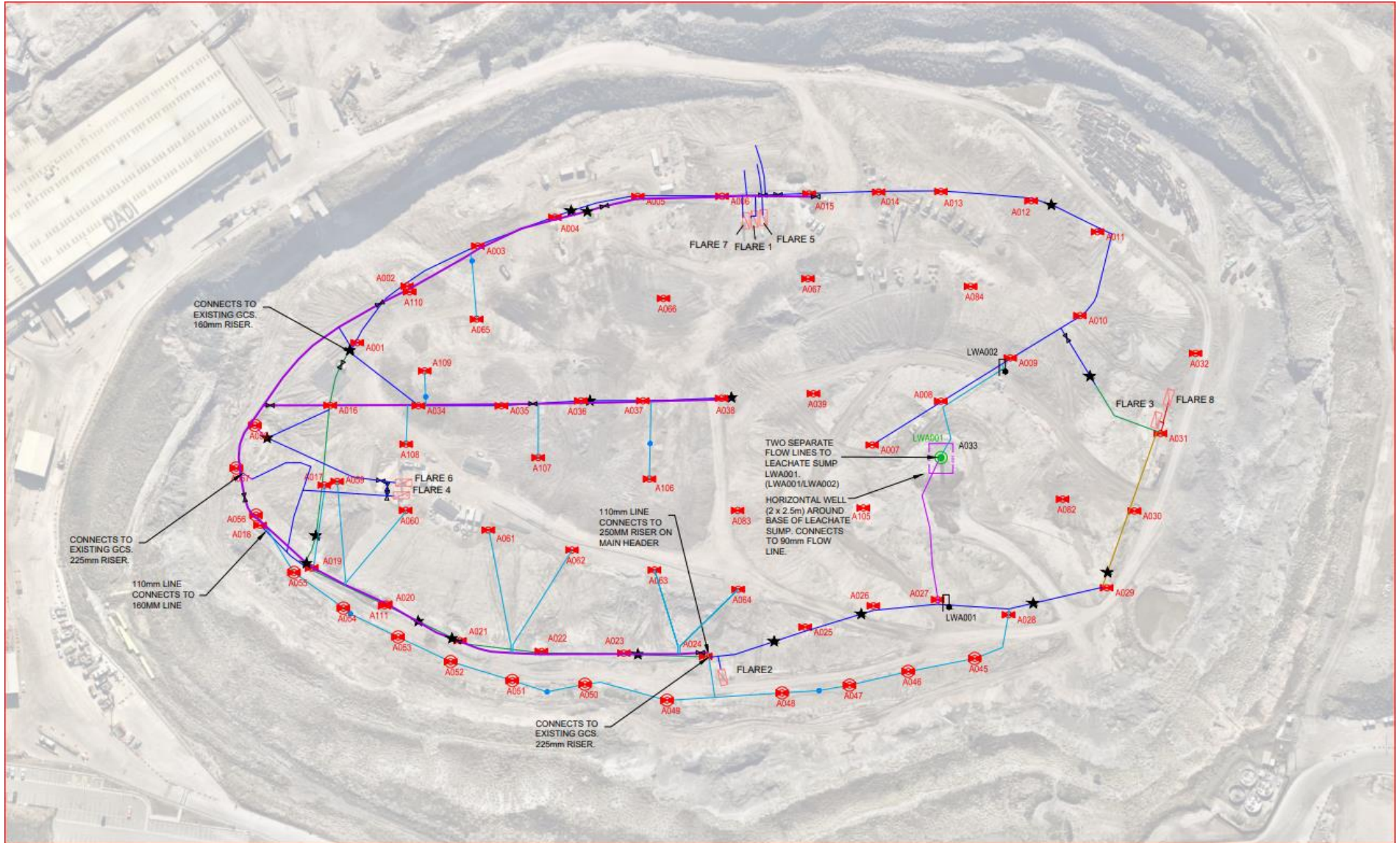
## Highlights from last two weeks include:

- All deep well drilling now completed – Drill rig removed from site.
- Repaired two collapsed wells.
- Stage 6 – 120m of 355mm pipe now completed and wells in this area now online.
- Gas welding of pipes for Stages 7 – 10 now completed, to be installed in the coming weeks.
- Fabrication of the two new flares continues offsite.
- Eight temporary flares continue to extract whilst construction continues on the 355mm pipe line.
- Landfill gas infrastructure upgrade is now ~ 50% completed.

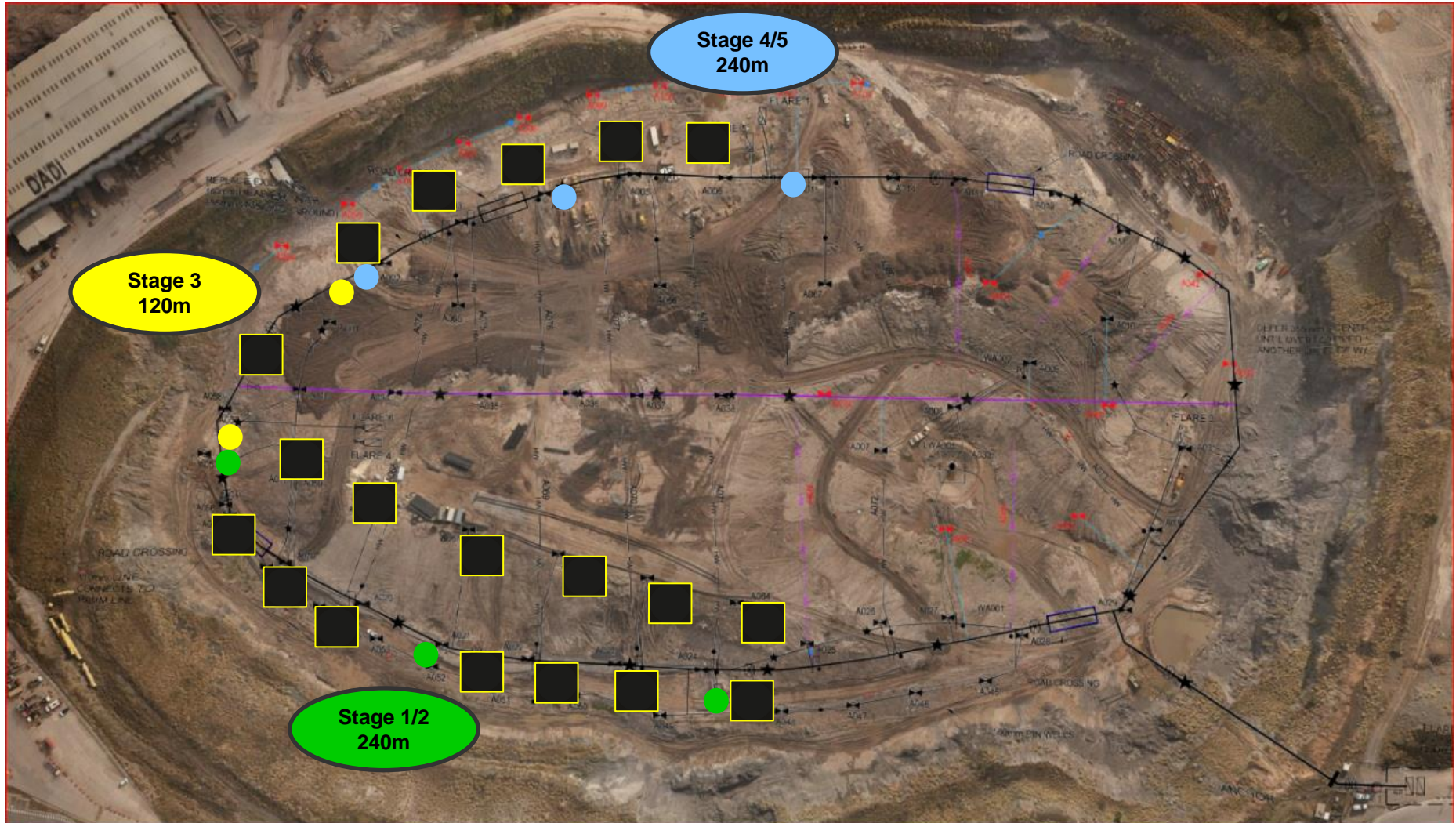
## Week 8 will be focused on the following activities:

- Preparation for civil works for new flare pads.
- Preparation for laying 355mm pipe for Stage 7 & 8 (operational area).
- Ongoing fabrication of two new flares offsite.
- Preparations for the 450mm header line.
- Ongoing tuning of the gas field to optimise flow through the new wells.

# Live as Built – 13 September (including wells not yet connected)

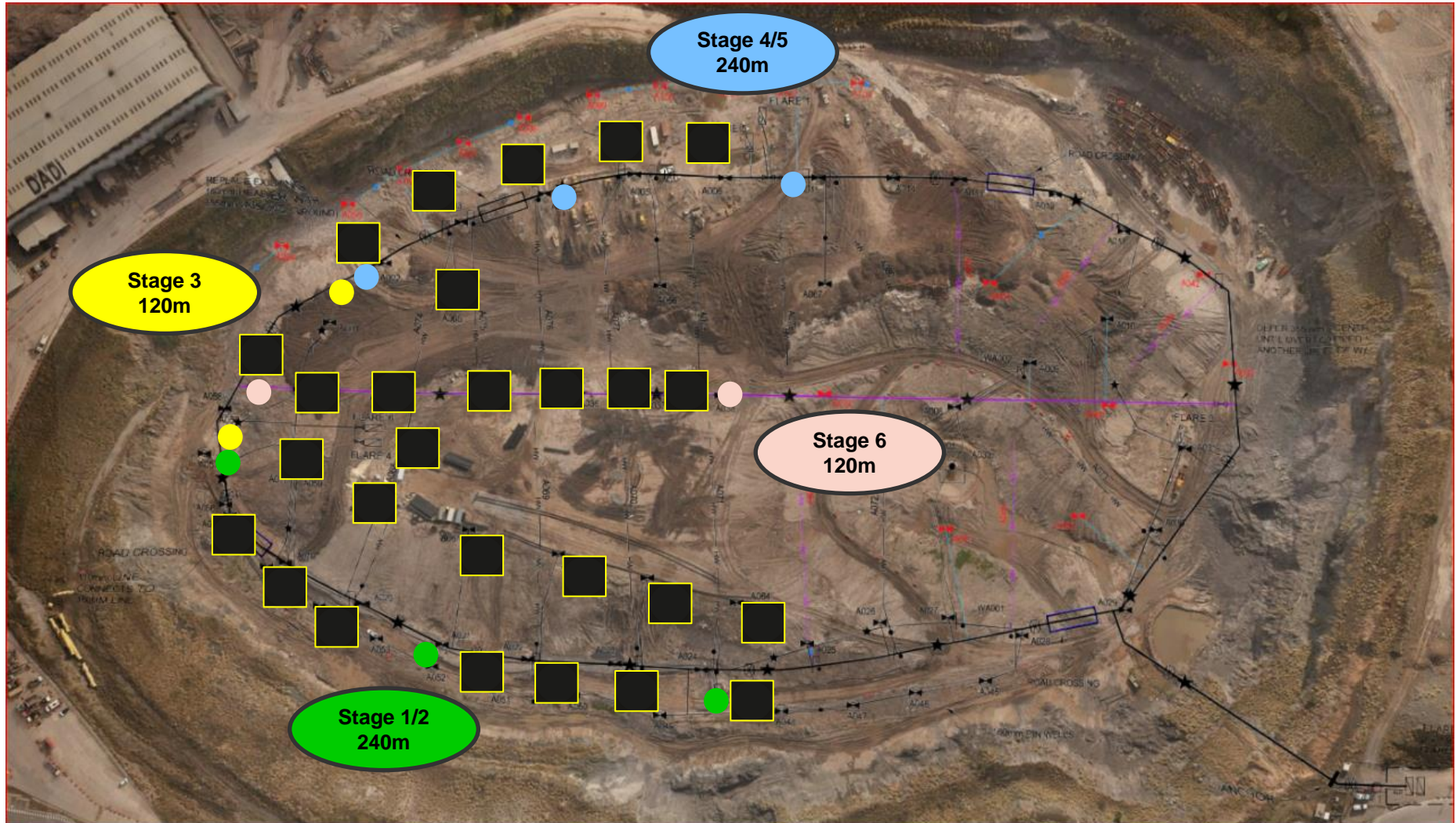


# Week 4: Program works – LFG 355mm Line



(19) Wells now active on the new 355mm Gas Line

# Week 5/6: Program works – LFG 355mm Line



 (27) Wells now active on the new 355mm Gas Line

## Stage 6 – 120m (8 extra wells online) – 27 wells now active on 355mm Line



## Flare Overview – 13 September 2022 - > 95% uptime

Flare 1	Flare 2	Flare 3	Flare 4	Flare 5	Flare 6	Flare 7	Flare 8
<b>Bio-Gas</b> 500m <sup>3</sup> per Hour	<b>Bio-Gas</b> 700m <sup>3</sup> per Hour	<b>Run Energy</b> 500m <sup>3</sup> per Hour	<b>Run Energy</b> 500m <sup>3</sup> per Hour	<b>Run Energy</b> 500m <sup>3</sup> per Hour	<b>Run Energy</b> 500m <sup>3</sup> per Hour	<b>LGI Energy</b> 500m <sup>3</sup> per Hour	<b>LMS Energy</b> 300m <sup>3</sup> per Hour
Running	Running	Running	Running	Running	Running	Running	Running
North	South	East	West	North	West	North	East